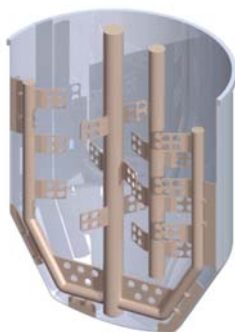


Summary: Agitators for Standard Tanks

I Anchors



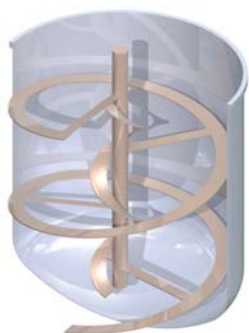
Option 01:
U-shaped anchor



Option 02:
Anchor with radial flow deflector



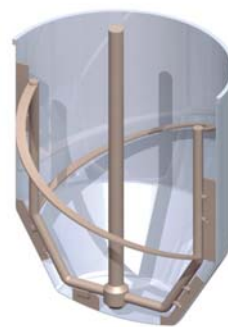
Option 03:
U-shaped anchor with blade



Option 04:
Helical ribbon-type anchor

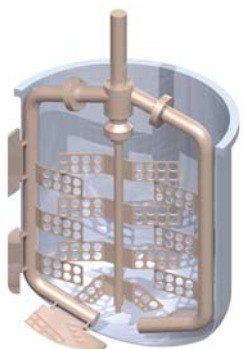


Option 05:
Loop-type anchor



Option 06:
Helical loop-type anchor

I Combined agitation



Anchor with counter-rotating blades
on the central shaft



Loop-type anchor
with Cowles turbine

Summary: Agitators for Standard Tanks

I Propellers



Marine propeller



Gamma propeller



Lineflux propeller

I Blades



Inclined blades (T6)



Inclined blades (T11)



High flow blades



Blades on the central shaft

I Turbines



Cowles disk



Radial turbine

All the agitators can be mounted in tanks with rounded or conical bottoms.